

Foodservice Equipment • Material Handling, Healthcare & Cleanroom Equipment • Retail Display



HFL-5000 Touch Free Handwashing System

Item #: _____
 Model #: _____
 Project #: _____
 SIS #: _____



Short Form Specifications

Eagle Handwashing System, model HFL-5000. Constructed of type 304 stainless steel with deep-drawn positive drain sink bowl, basket drain, inverted "V" edge to prevent spillage, removable stainless steel trash container, and MICROGARD® antimicrobial protection. T&S electronic eye faucet, automated touchless paper towel dispenser, hands-free hand sanitizer dispenser, hands-free soap dispenser, glove rack and white bristle nail brush.

HFL-5000 Components:

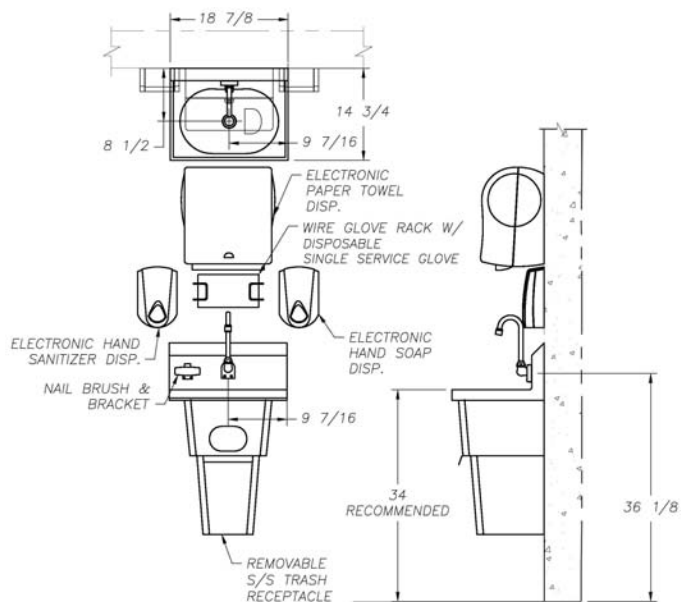
- **Eagle** hand sink model #HSA-10-FE-B-T-NB-MG with MICROGARD® antimicrobial protection.
- **San Jamar** touchless towel dispenser. Eagle part #352854. Use Tork #RB1000 towel roll #H21 system.
- **T&S** electronic eye faucet, splash mounted with battery and AC adapter for dual operation - with AC adapter plugged in, faucet will automatically switch to AC power and conserve battery power. Eagle part #356128.
- **Purell/TFX** hand sanitizing dispenser. Eagle part #352852.
- **Gojo/TFX** hand soap dispenser. Eagle part #352853.
- **FoodHandler** glove rack with single service gloves. Model #11-0012. Eagle part #352855.
- **Tucel** soft bristle white nail brush. Model #1832. Eagle part #348602.

NOTE: Model HFL-5000 by EAGLE is listed under Kochman AutoCad symbol library for foodservice equipment.



#HFL-5000 with towel dispenser, soap dispenser, hand sanitizer dispenser and glove box holder

model #	list
HFL-5000	3490



Spec sheets available for viewing, printing or downloading from our online literature library at www.eaglegrp.com