

SaniTwice™

SaniTwice: The *no-water* solution for ServeReady Hands

Where Should We Use SaniTwice?

In remote areas where soap and water are unavailable or in short supply.

- + Catered events, church picnics, outdoor venues/fairs, petting zoos
- + For added protection in high risk areas

When Should We Use SaniTwice?

When hands are light to moderately soiled and hand hygiene is needed

- + Before handling or serving food, after clearing dishes
- + Between handling soiled and clean dishes
- + During outbreaks as an added precaution

What is SaniTwice?

A 3-step method for hand cleansing:

Step 1

Apply excess of an alcohol based hand sanitizer (3–5 mL) and “wash” hands using friction and the “claw to paw” technique.

Step 2

Vigorously towel off hand sanitizer/soil with a single-use paper towel.

Step 3

Rub label recommended amount (about 1.5 mL) of hand sanitizer on hands until dry.

Why Should We Use SaniTwice?

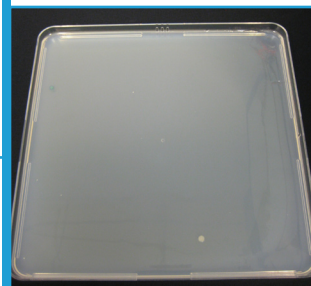
- SaniTwice is a simple and portable method that requires only a supply of paper towels and hand sanitizer.
- The SaniTwice method has been proven to reduce the number of bacteria on the hands as well as or better than washing with a typical bland soap and water by an independent test laboratory.
- The SaniTwice method is an acceptable alternative to handwashing for remote locations where soap and an adequate water supply are not readily available.

For more information visit the handwashingforlife® website:

http://www.handwashingforlife.com/sanitwice_hand_washing_without_water



Hand Contaminated
with E. coli



Hand after SaniTwice™
with a synergized
70% ethanol
hand sanitizer
formulation

Serve Ready™
HANDS